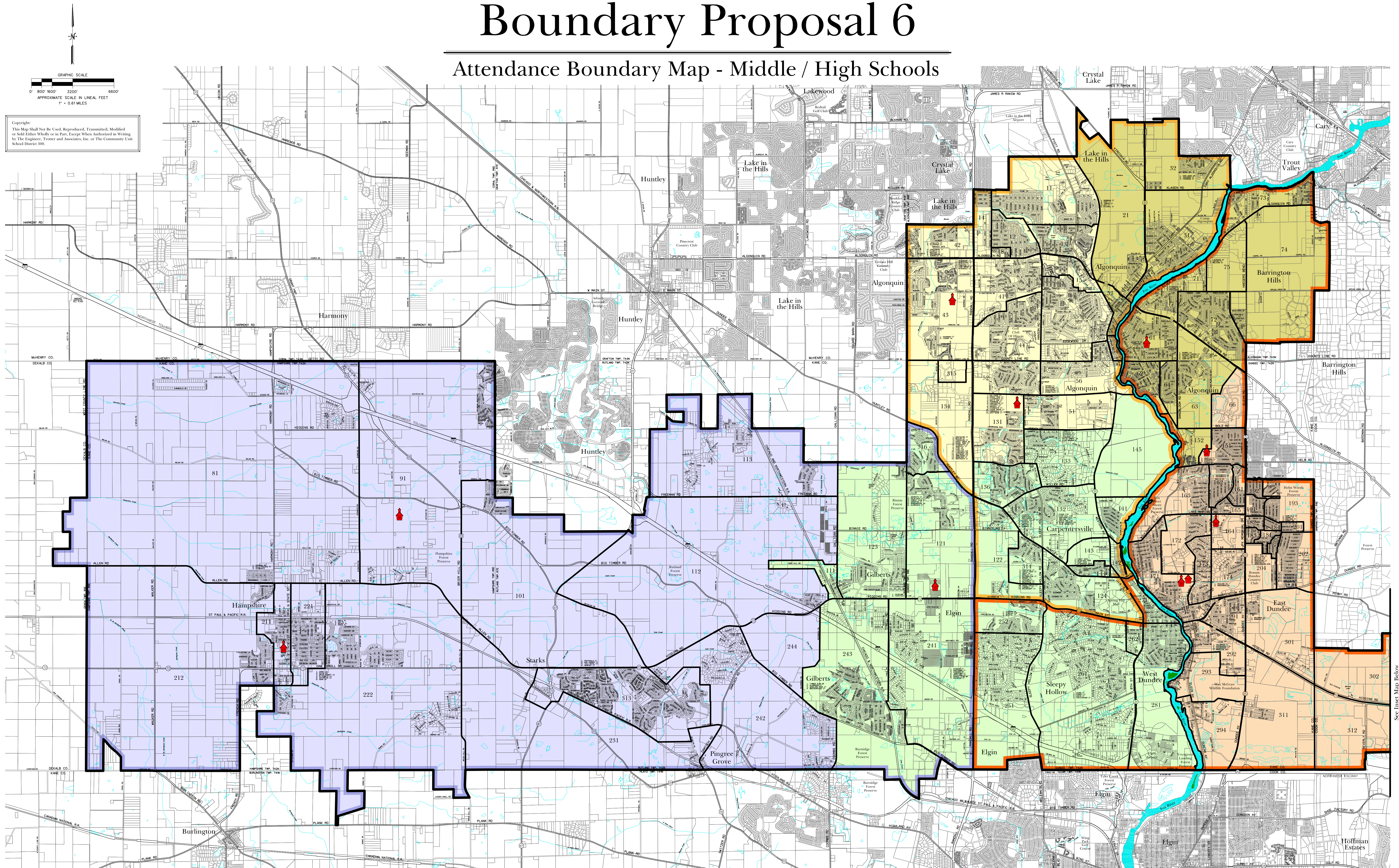


## Attendance Boundary Map - Middle / High Schools



### Legend

## Middle School Move Summary

<u>Attendance Zone Number</u>	<u>Existing School</u>	<u>Proposed School</u>
313	DMS	HMS
152	CMS	AMS

## High School Move Summary

<u>Attendance Zone Number</u>	<u>Existing School</u>	<u>Proposed School</u>
21, 31, 32, 53, 141, 142, 143, 144, 145,	DCH	HDJ
111, 121, 123, 241, 313, 316	HDJ	HHS

### Administration/Special Facilities


**District 300 Board of Education  
Administration Center**  
300 CLEVELAND AVENUE  
CARPENTERSVILLE, ILLINOIS 60110  
PHONE: 847.426.1200  
www.d300.k12.il.us

**Oak Ridge School**  
229 LAKE MARIAN ROAD  
CARPENTERSVILLE, ILLINOIS 60110-2810  
PHONE: 847.426.4052  
FAX: 847.426.4474

## Community Unit School District 300 - Middle Schools

**Algonquin Middle School**  
520 LONGWOOD DRIVE  
ALGONQUIN, ILLINOIS 60102-3099  
PHONE: 847.658.7545  
FAX: 847.658.2547

## Community Unit School District 300 - High Schools




**Dundee-Crown High School**  
 1 CHARGER COUNTRY DRIVE  
 CARPENTERSVILLE, ILLINOIS 60110-1474  
 PHONE: 847.426.1415  
 FAX: 847.425.1245

DCHS



**Jacobs High School**  
2501 BUNKER HILL DRIVE  
ALGONQUIN, ILLINOIS 60102-9734  
PHONE: 847.658.2500  
FAX: 847.658.3203



**New Hampshire High School**  
 1000 EAST BIG TIMBER ROAD  
 HAMPSHIRE, ILLINOIS 60140  
 PHONE: 847.  
 FAX: 847.

**Carpentersville Middle School**  
100 CLEVELAND AVENUE  
CARPENTERSVILLE, ILLINOIS 60110-2160  
PHONE: 847.426.1380  
FAX: 847.426.1404

**Dundee Middle School**  
377W450 ROUTE 72  
WEST DUNDEE, ILLINOIS 60120-0590  
PHONE: 815.426.1485  
FAX: 815.420.8908

Hampshire Middle School  
560 SOUTH STATE STREET  
HAMPSHIRE, ILLINOIS 60140-9605  
PHONE: 847.683.2522

**Westfield Community Middle School**  
2100 SLEEPY HOLLOW ROAD  
ALCONQUIN, ILLINOIS 60102-6049  
PHONE: 847.458.2100  
FAX: 847.458.2109

Prepared For:



Prepared By:



Date: February 10, 2002  
Revised: December 5, 2007

See Above Right for Continuation

